

REF.:4853

Andorra | Sotheby's
INTERNATIONAL REALTY

Apartment for sale in Lisbon

Portugal - Lisboa

Superficie	Habitaciones	Baños	Precio
139 m ²	3	2	825.000 €

Contáctenos para recibir más información o solicitar una visita

+376 872 222

info@sir.ad



REF.:4853

Apartment for sale in Lisbon

Portugal - Lisboa

Superficie	Habitaciones	Baños	Precio
139 m²	3	2	825.000 €

Contáctenos para recibir más información o solicitar una visita

 +376 872 222

 info@sir.ad

Prata Riverside Village is an absolutely unique undertaking. This is an architectural project that intersects with the latest technology and whose materials are sustainable and long-lasting. With its foundation in the past and its eyes on the future, this venture represents what Lisbon has to offer, going far beyond the meaning of change. With implausible and clearly distinct elements such as the traditional ceramic tiles that line the façade in harmony with the modern architecture of Renzo Piano, Prata Riverside Village rises with privileged views over the Tagus River and opens up unobtrusively to a simply stunning backdrop. The apartments are available from studios to T5 types, all of which include private parking. In the interior space of the development, you can enjoy generous garden space, sunny terraces and extensive balconies that offer everything for your retreat. In the outdoor space, one lives the freedom of the resplendent green space that is Parque das Nações, complemented by several leisure areas, commercial spaces, terraces, playgrounds and a bike path by the river.

Características

- Terrassa
- Jardí
- Zona verda
- Balcó
- Ascensor
- Porta de seguretat
- Parking
- Transport públic aprop
- Propietat internacional

REF.:4853

Andorra | Sotheby's
INTERNATIONAL REALTY

Apartment for sale in Lisbon

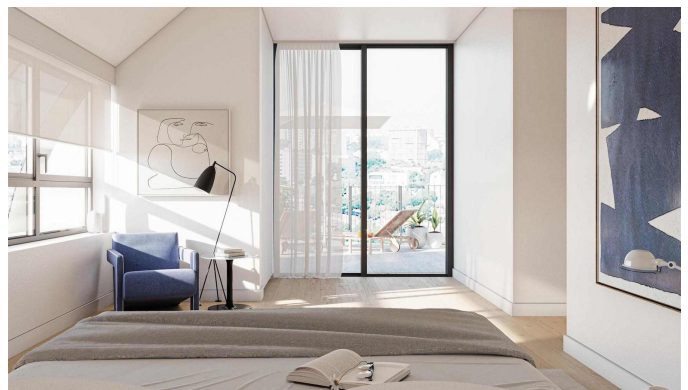
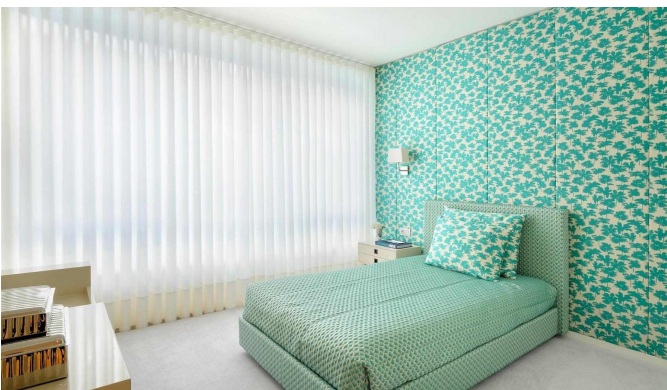
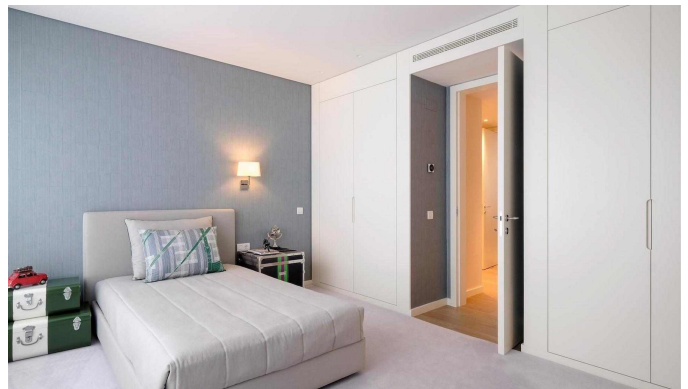
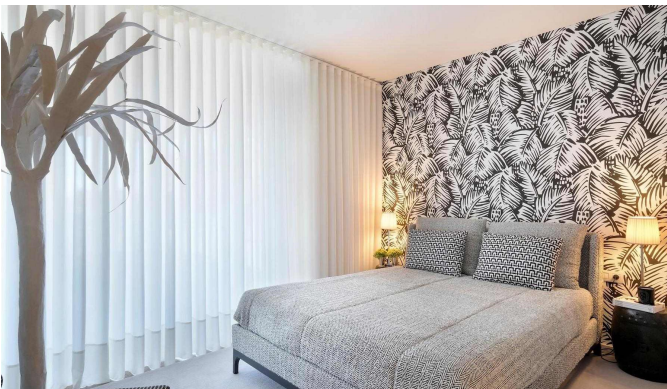
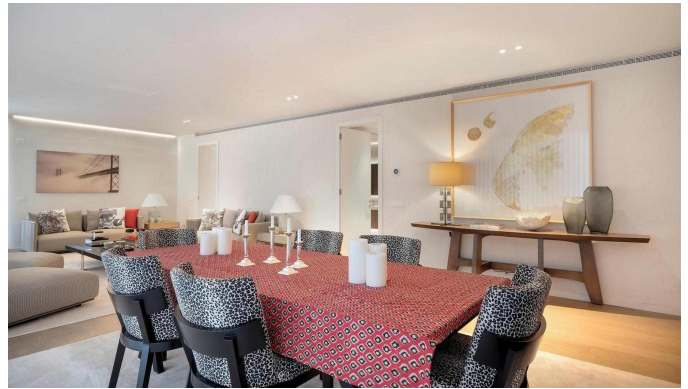
Portugal - Lisboa

Superficie	Habitaciones	Baños	Precio
139 m ²	3	2	825.000 €

Contáctenos para recibir más información o solicitar una visita

 +376 872 222

 info@sir.ad



Sotheby's International Realty® is a registered trademark licensed to Sotheby's International Realty Affiliates LLC. Each Sotheby's International Realty® office is independently owned and operated.

Andorra Sotheby's International Realty
Calle Santa Anna, 14 AD700 Escaldes-Engordany Principado de Andorra
Tel: +376 872 222 · Email: info@sir.ad

www.andorra-sothebysrealty.com